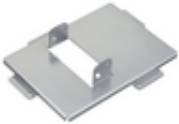


ET-PKL420B  
Bracket Assembly



## KEY FEATURES

- Bracket Assembly
- Approx 0.7kg (1.5lbs)
- 276 x 54.5 x 205mm (10-7/8 x 2-5/32 x 8-1/16 inches)

Applicable ceiling mount bracket: ET-PKL100H/PKL100S

Applicable projector: PT-LW330/LW280/LB360/LB330/LB300/LB280

## SPECIFICATIONS

URL: <https://business.panasonic.com.my/visual-system/et-pkl420b>

## CONTACT

Web: <https://business.panasonic.com.my/visual-system/contact-us>