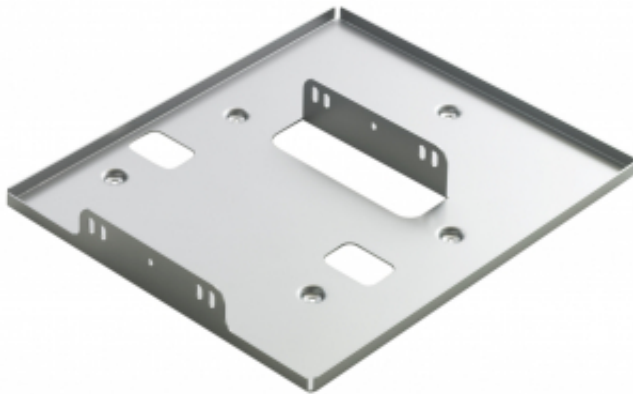


ET-PAD310

Attachment for ceiling mount bracket



KEY FEATURES

- Attachment for ceiling mount bracket
- 2.9 kg (6.4 lbs)
- 380 x 50 x 443 mm (14-31/32" x 1-31/32" x 17-7/16")

Applicable ceiling mount brackets: ET-PKD100H/PKD100S/PKD77H/PKD75S/PKD56H/PKD55S

Applicable projector: PT-DZ13K/DS12K/DW11K/DZ10K/PT-DZ8700/DS8500/DW8300 -

SPECIFICATIONS

URL: <https://business.panasonic.com.my/visual-system/et-pad310>

CONTACT

Web: <https://business.panasonic.com.my/visual-system/contact-us>